

Project
CCDA- kleine zaal


Plot
TOP-Bar Dada opstelling


Contact
kristof.haagdoren@ccdeadelberg.be

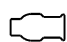



Legende symbolen

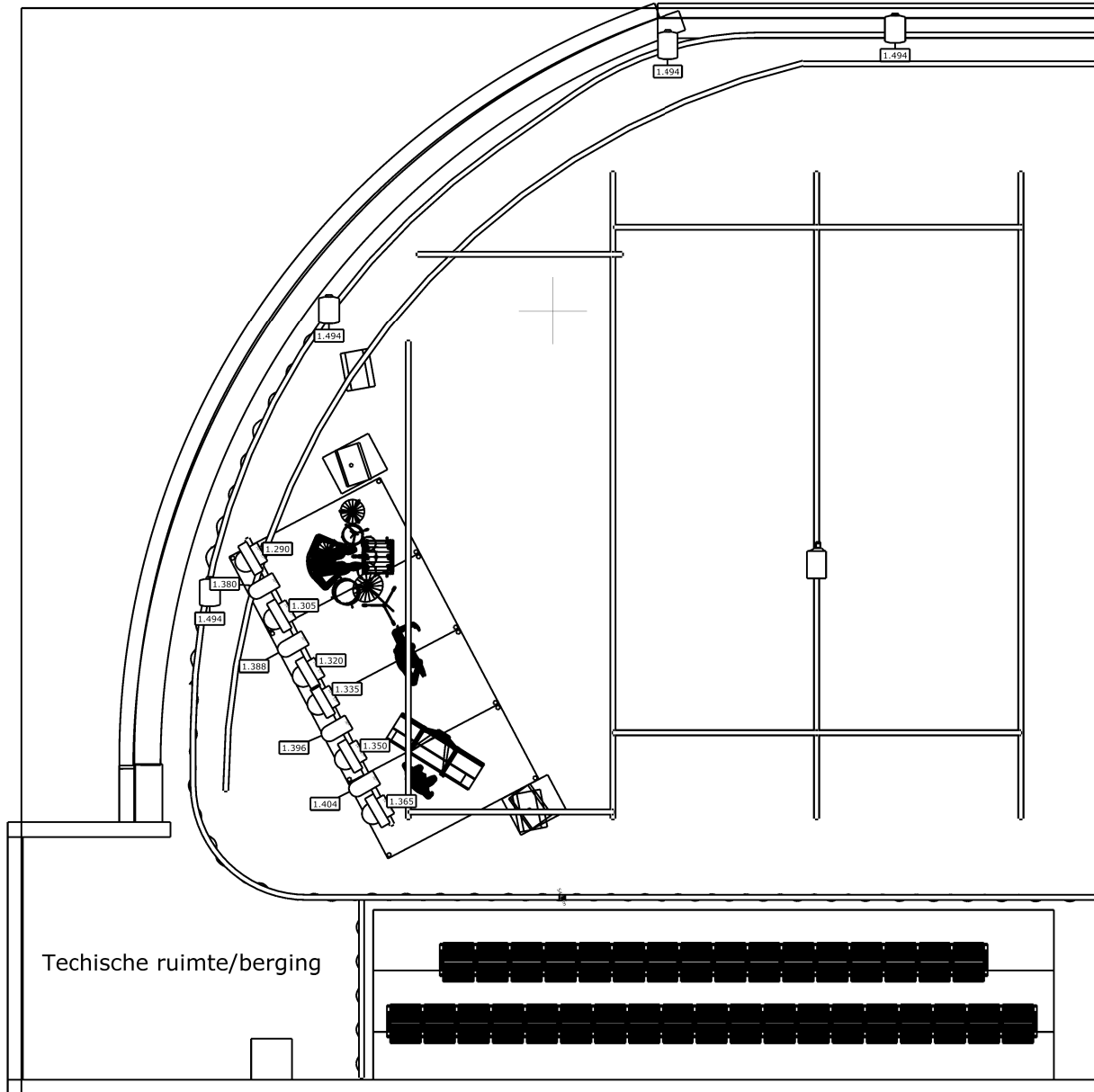
 SixPar 200 (10)

 Fuze Wash Z120 (6)

 Panasonic RZ770 (1)

 ColorSource Spot Zoom
25°-50° (Deep Blue) (6)

 ADJ COB Cannon Wash



GRID:
Verticale buizen zijn vast.
Horizontale buizen zijn verplaatsbaar